

Bentone B 30A RME

6,0 - 17,0 kg/h (71-202kW)

Bentone B 40A RME

9,0-29,5 kg/h (107-350kW)

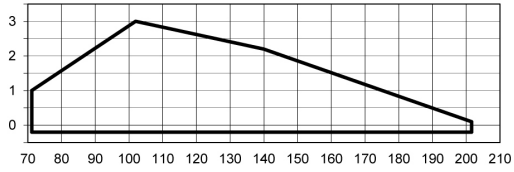
Oilburner

- Energy saving and compatible with environmental requirements
- Quiet in operation and designed for easy maintenance
- Reliable and trouble free
- Designed for approved an accordance with the European standard EN 267
- Suitable for Hight Resistance Boiler
- Industry standard components easily available
- Plugg-in contact facilitates the installation
- Safety shut-off valve with internal parts of ruby and stainless steel

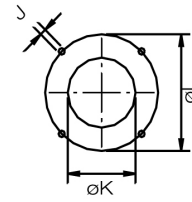
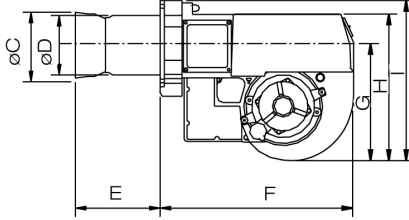
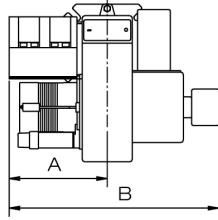
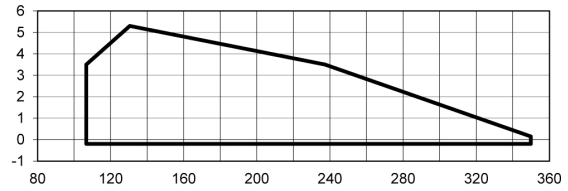
Type	Typ	Type		B30A RME	B40A RME
Model	Modell	Modèle		B30A	B40A
Capacity	Leistung	Débit	kg/h	6,0-17,0	9,0-29,5
			kW	71-202	107-350
Motor	Motor	Moteur	V/Hz/W	230/50-60/180/1,1	230/50/250/1,1
Control box	Ölfeuerungsautomat	Coffret de sécurité		Siemens	
Fuel pump	Ölpumpe	Pompe à fuel		Suntec	
Gross weight	Gewicht, brutto	Poids brut	kg c.	14	18
Volume	Volumen	Volume	m ³ c.	0,04	

• Standard * Accessories/Zubehören/Accessoires

B30A RME



B40A RME



	A	B	øC	øD	E	F	G	H	I	J	øK	øL
B 30A RME	175	382	108	108	187	372	220	281	303	M10	115	160-190
B 40A RME	195	400	127	114	172	420	260	310	360	M12	135	200-230

available with a 100 mm longer blast tube/mit einem um 100 mm längeren Brennerrohr erhältlich/peut être livré avec un tube diffuseur plus long de 100 mm.